



RASTRAC®

Automated Tracking Solutions For Security & Emergency Service Providers



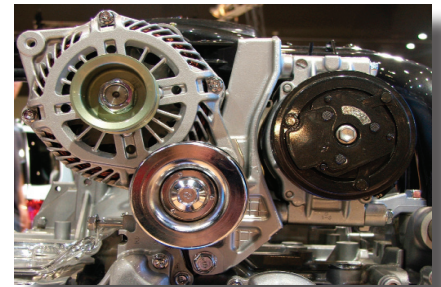
Watch Activities

- Routes
- Speed
- Turns
- Checkpoint performance
- Arrivals / Departures
- Deceleration / Acceleration
- Location (even on private roads)
- 24-hour tracking throughout the U.S. and South America

Get real-time alerts and notifications

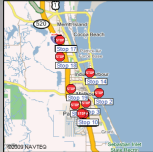
Prevent Equipment Breakdowns

- Get automated reports on engine performance
- Identify need for preventive maintenance to reduce engine damage and potentially costly breakdowns



Stop Report for YCOM 452
January 31, 2010 12:00:00 AM - February 02, 2010 01:51:54 PM
[Click here to print this report](#)

Report Summary	
Number of Trips	18
Total Trip Time (% of Total)	08:19:09 (9%)
Trip Distance	145.63 miles
Average Trip Time	00:17:43
Average Trip Distance	8.09 miles
Total Distance	145.74 miles
Number of Stops	19
Total Stop Time (% of Total)	2 Days 08:32:45 (94%)
Min Duration Time	00:05:01
Average Duration Time	02:58:33
Max duration Time	1 Day 10:10:55



Stop #	Arrival	Departure	Duration	Received	Address	Engine Hours	Event	Ignite	Error Code	Odometer	Messages	Fuel Level	Battery	Oil Level	Oil Temp	Oil Pressure
1	Jan. 31, 2010 12:00:00 AM	Feb. 01, 2010 10:10:16 AM	1 Day 10:10:16 (Estimated)	Feb. 01, 2010 10:11:30 AM	245 Salsburg St. 95 Park Blvd. EL 32902		Ignition On-108	Ignition On		19189.521 miles						
Trip Time: 00:32:46 Trip Distance: 16.79 miles																
2	Feb. 01, 2010 10:43:43 AM	Feb. 01, 2010 11:03:17 AM	00:19:36	Feb. 01, 2010 11:03:51 AM	2080 (Warehouse) Box (Suburban) EL 32902		Ignition On-108	Ignition On		19197.313 miles						

Get Better Data

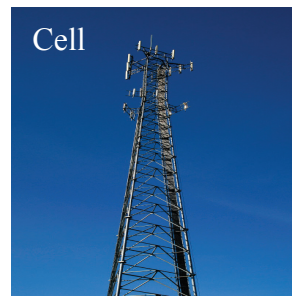
- Improve your project management with reports that detail actual mileage and vehicle performance
- Get turn-by-turn data on each vehicle by any time period you wish
- Set geofencing boundaries
- Receive more accurate fuel data

"In June 2001 we received a radio call from a driver and all he could say was my hand is pinned underneath the tow truck. I had no idea where he was but a simple click of the mouse on the RASTRAC® button at the bottom of my screen told me where he was and which truck was closest to him. I was able to call 911 and give them his location. This all happened within several minutes and was faster than trying to contact AAA dispatch and find out what call he was working."

Jeff Asher, President
BC Towing

RASTRAC is Designed to Meet Your Needs

- Choose from 60 different tracking devices or others as they are developed
- Select communications by radio, satellite, cellular, or GPRS
- Access a large variety of reports
- Set alerts and determine who will get alerted, and how
- Support for those either within or outside the U.S.



Go with a Proven Leader

- We service large numbers of clients outside the U.S.
- Get ongoing access to upgrades that contain new features and updates to ensure compatibility with the newest computer hardware and communication systems
- Get support from an established innovator in tracking systems, backed by more than 15 years and the tracking of 250,000 assets in over 60 countries

RASTRAC® Vehicles & Locations

Navigation: Vehicles & Locations, My Settings, Help, Sign Out

Tracking, Address Lookup, Reports

Vehicles & Locations: ISCO80502, ISCO80503, ISCO80504, ISCO80505, Unit 2, Unit 3, Unit 4, Unit 5

Map Type: Find Vehicle/Location, Today's Trac, Yesterday, Select trac

Zoom: 2 kilometers wide, 5 kilometers wide, 20 kilometers wide, 50 kilometers wide, 200 kilometers wide, 500 kilometers wide

Map Size: None, Small, Medium, Large

Communication: Show Me!, Get Vehicle Position

Map Data: EDWARDS-KORE-5927, Florida Native, HAMPTON VAN, HAMPTON F-150, Feb. 01, 2010 at 10:15:43 AM, 2086 Keel Way, Kissimmee, FL, 34744, Received: Feb. 01, 2010 10:15:43 AM, Event: Ignition Off, Inputs: Ignition OFF, Odometer: 47319.49 miles, Satellites: 7, GPS: GPS

RASTRAC®

Solutions for every tracking need.

www.rastrac.com
(877) 680-1188